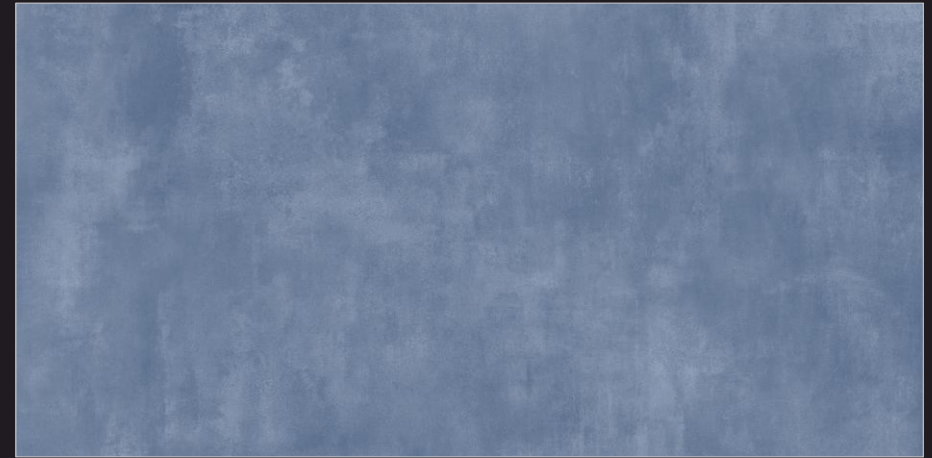




GVT / PGVT

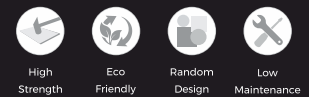


42390



600x  
1200mm

GLOSSY FINISH





GVT / PGVT



42391



600x  
1200mm

GLOSSY FINISH

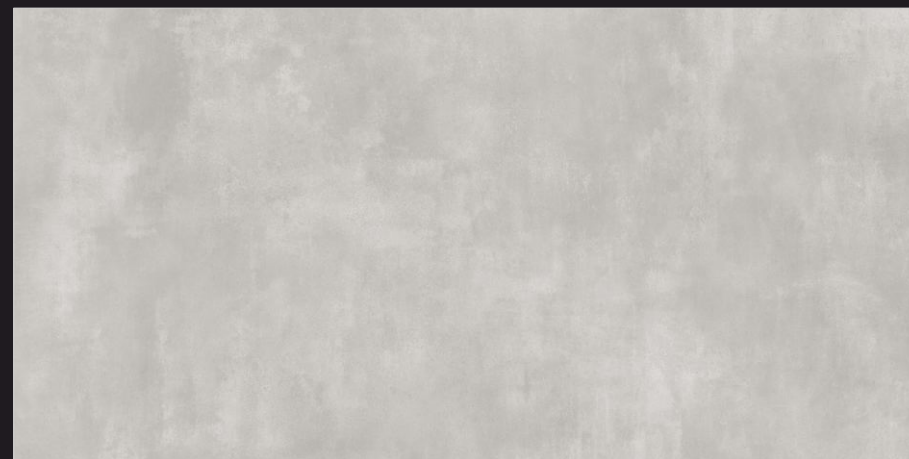




GVT / PGVT

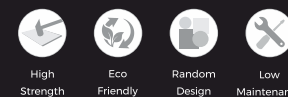


42392



600x  
1200mm

GLOSSY FINISH





GVT / PGVT



42393



600x  
1200mm

GLOSSY FINISH



High  
Strength



Eco  
Friendly



Random  
Design



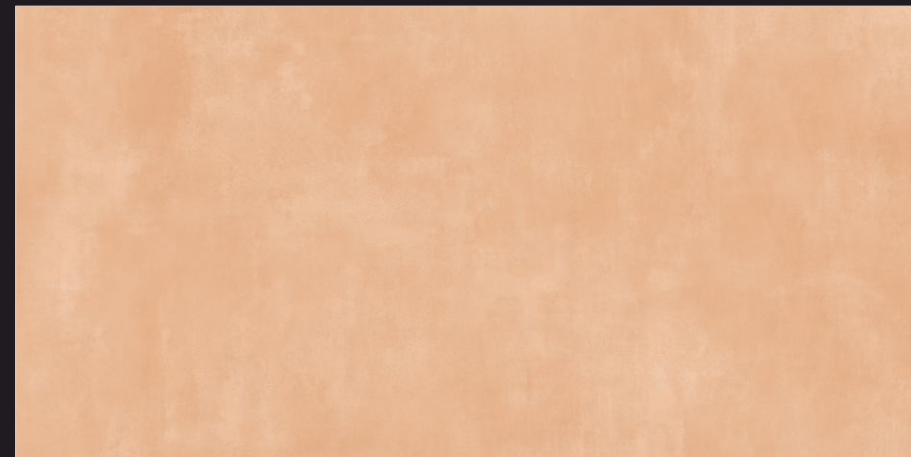
Low  
Maintenance



GVT / PGVT



42394



600x  
1200mm

GLOSSY FINISH



High  
Strength



Eco  
Friendly



Random  
Design



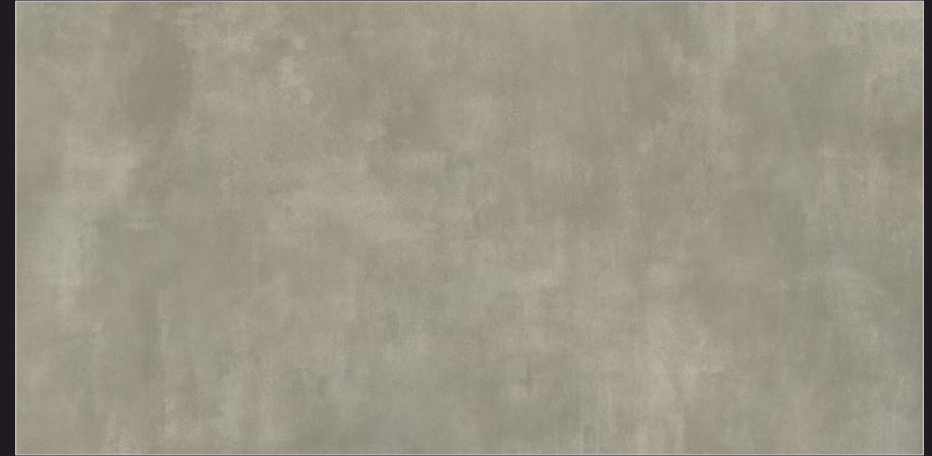
Low  
Maintenance



GVT / PGVT



42395



600x  
1200mm

GLOSSY FINISH

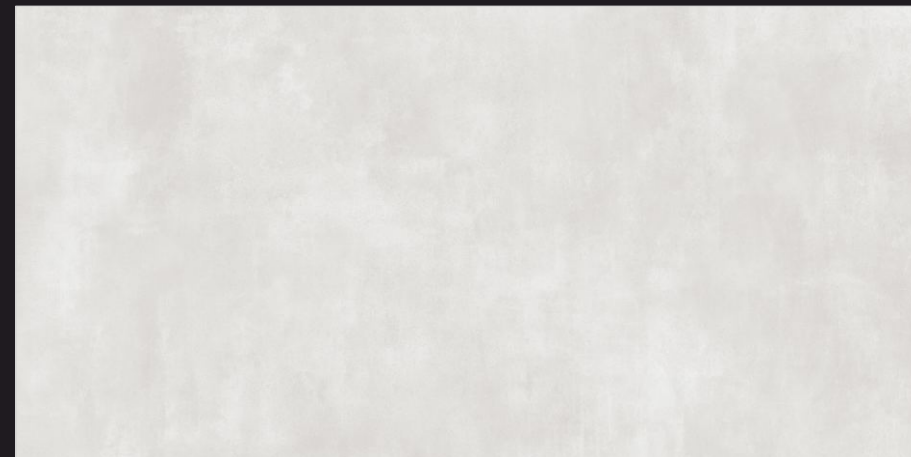




GVT / PGVT

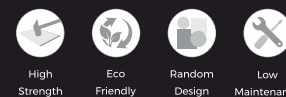


42396



600x  
1200mm

GLOSSY FINISH



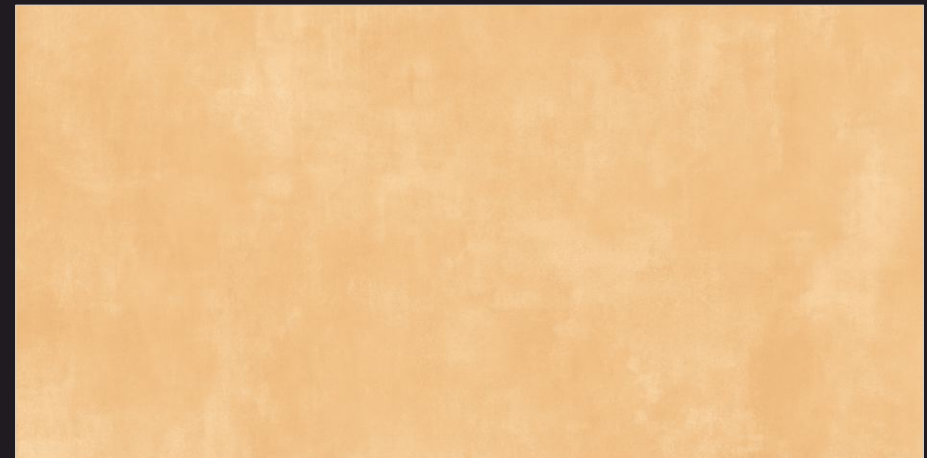




GVT / PGVT



42397



600x  
1200mm

GLOSSY FINISH



High  
Strength



Eco  
Friendly



Random  
Design



Low  
Maintenance



GVT / PGVT

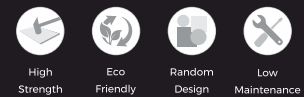


42398



600x  
1200mm

GLOSSY FINISH



# TECHNICAL SPECIFICATION

CHARACTERISTIC	STANDARD AS PER ISO-13006/EN14411 GROUP BLA	MEAN VALUE OF PASSION	TEST METHOD
<b>REGULATORY PROPERTIES</b>			
Deviation in Length & Width	±0.5%	±0.1%	ISO-10545-2
Deviation in Thickness	±5.0%	±4.0%	ISO-10545-2
Straightness in Side	±0.5%	±0.1%	ISO-10545-2
Rectangularity	±0.5%	±0.1%	ISO-10545-2
Surface Flatness	±0.5%	±0.2%	ISO-10545-2
Color Difference	Unaltered	No Change	ISO-10545-16
Glossiness (ONLY FOR PGVT)	As Per Mfg.	Min 90%	GLOSSMETER
<b>STRUCTURAL PROPERTIES</b>			
Water Absorption	< 0.50%	< 0.05%	ISO-10545-3
Apparent Density	> 2.0 g/cc	> 2.10 g/cc	DIN 51082
<b>MASSIVE MECHANICAL PROPERTIES</b>			
Modulus of Rupture	Min. 35 N/mm <sup>2</sup>	Min. 40 N/mm <sup>2</sup>	ISO-10545-4
Breaking Strength	Min. 1300 N	Min. 2000 N	ISO-10545-4
Impact Resistance	As Per Mfg.	Min. 0.55	ISO-10545-5
<b>SURFACE MECHANICAL PROPERTIES</b>			
Surface Abrasion Resistance	As Per Mfg.	Min. Class-3	ISO-10545-7
MOH's Hardness	As Per Mfg.	Min. 4	EN 101
<b>THERMO HYGROMETRIC PROPERTIES</b>			
Frost Resistance	No Damage	No Damage	ISO-10545-12
Thermal Shock Resistance	No Damage	No Damage	ISO-10545-09
Moisture Expansion	Nil	Nil	ISO-10545-10
Thermal Expansion (COE)	Max. 9.0 x 10 <sup>-6</sup>	Max. 6.5 x 10 <sup>-6</sup>	ISO-10545-8
Crazing Resistance	As Per Mfg.	Min. 10 Cycle	ISO-10545-11
<b>CHEMICAL PROPERTIES</b>			
Chemical Resistance	No Damage	No Damage	ISO-10545-13
Stain Resistance	Resistance	Resistance	ISO-10545-14
<b>SAFETY PROPERTIES</b>			
Slip Resistance	As Per Mfg.	> 0.40	ISO-10545-17
Fire Resistance	As Per Mfg.	Fireproof	N. A.
Lead & Cadmium Given Off By Glazed Tiles	As Per Mfg.	Does Not Yield Pb & Cd	ISO-10545-15

## PACKING DETAILS

DIMENSION	THICKNESS	PCS/BOX	COVERAGE AREA	BOX WEIGHT
600 X 1200 MM	9 MM (APPROX)	2	1.44 SQM.	30 KG ( APPROX)

**DISCLAIMER:** We tiles reserve the right to deleted and amend either totally or partially, any of the colors, shape, sizes, references and other technical specification contained in this catalogue at anytime. The colors shown of tiles in this catalogue are purely illustrative and limited to printing process. Please refer actual sample before final selection. The details of sizes, colors, references should be verified for typographical errors.



**PASSION VITRIFIED PVT. LTD.**

Survey No. 223/P1,  
Sartanpar Road, Near Matel,  
Ta. Wankaner - 363621, Dist: Morbi, Gujarat, India.

T. - +91 99250 34828  
E. - [marketing@passiontiles.com](mailto:marketing@passiontiles.com)  
w. - [www.passiontiles.com](http://www.passiontiles.com)